




# Keele Station



Proposed 4-bay bus terminal; traffic control for bus movements being studied



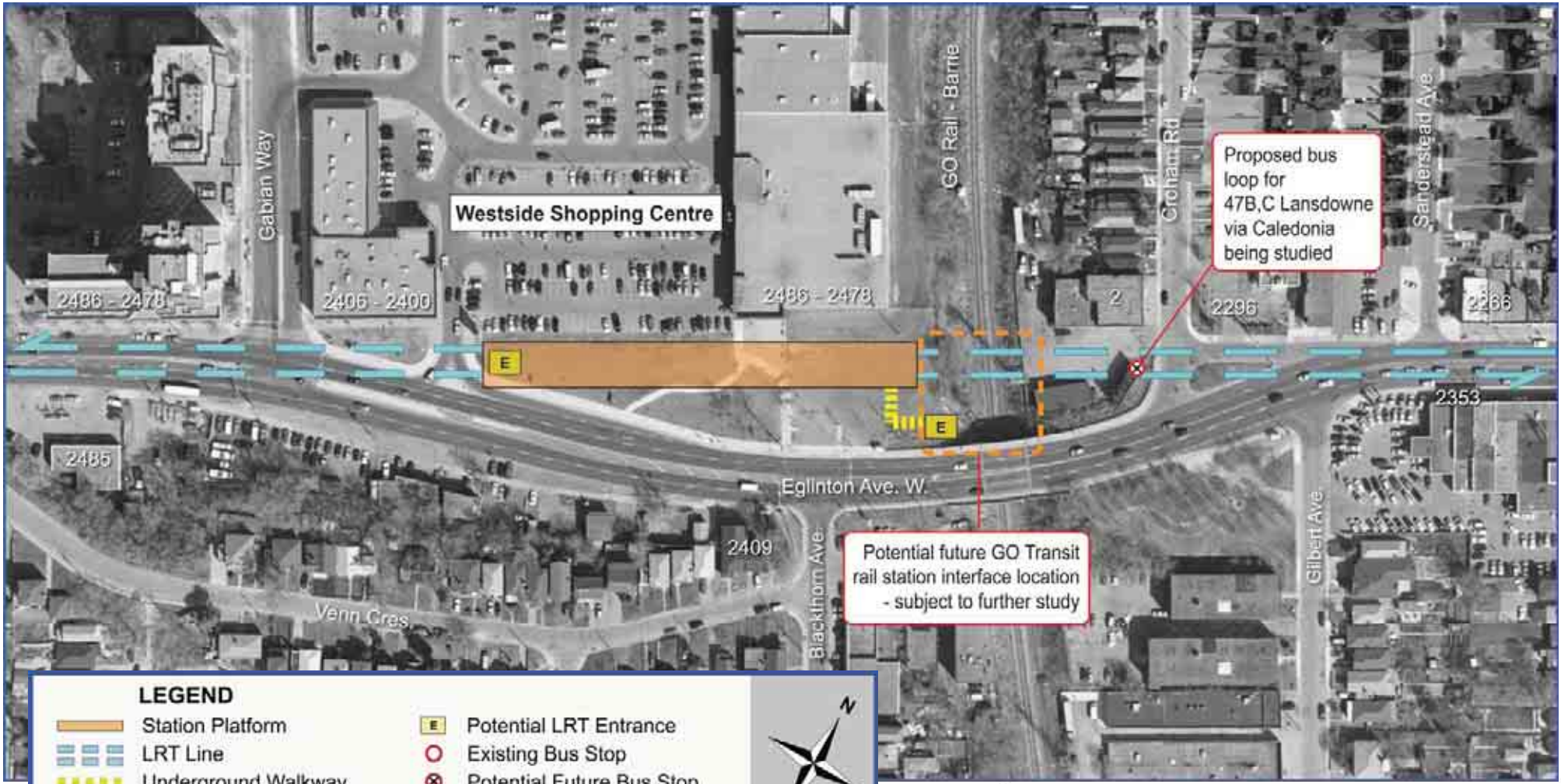
**LEGEND**

 Station Platform	 Potential LRT Entrance
 LRT Line	 Existing Bus Stop
 Underground Walkway	 Potential Future Bus Stop
	<b>1901</b> Street Number





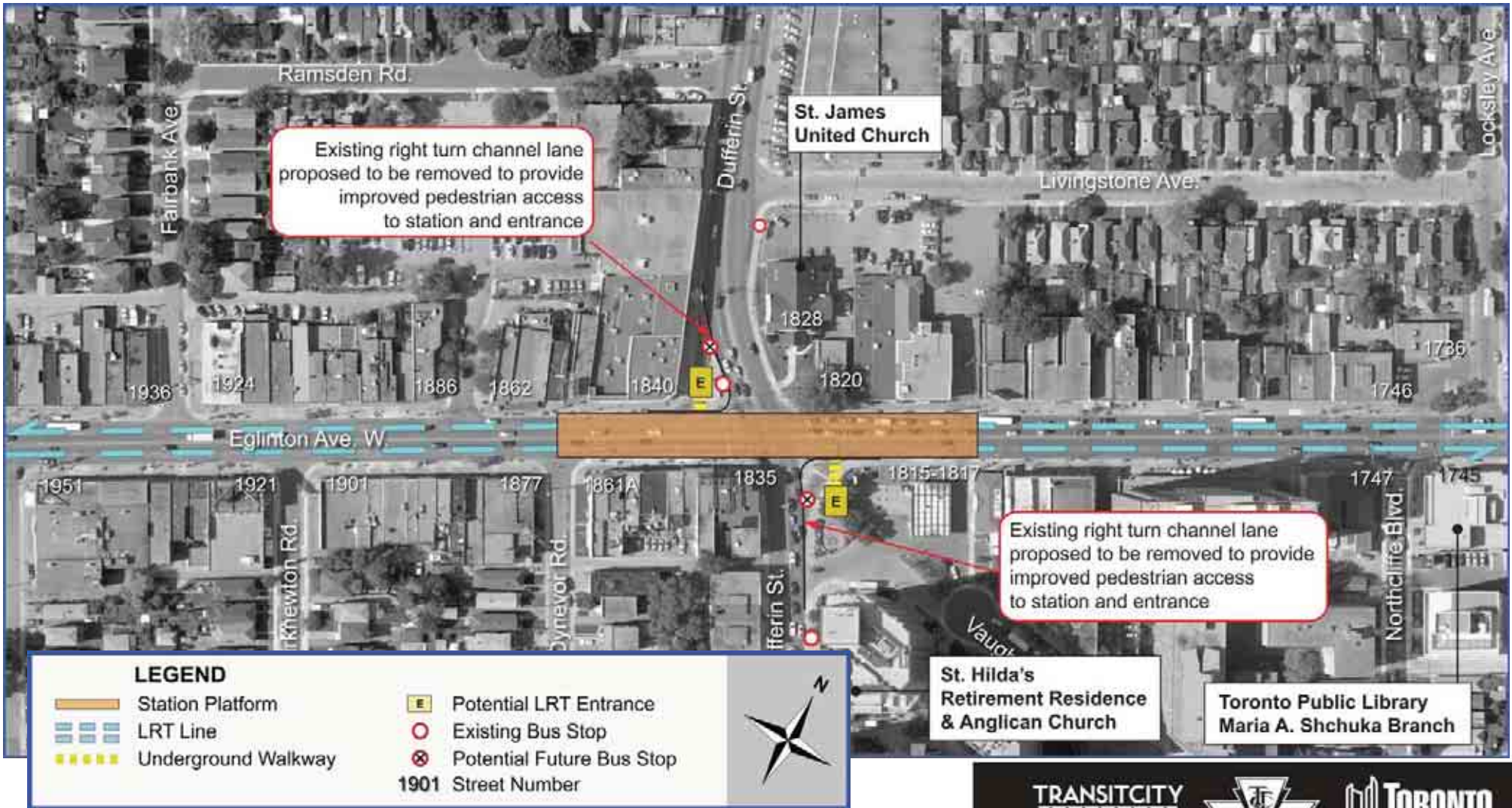
# Caledonia Station



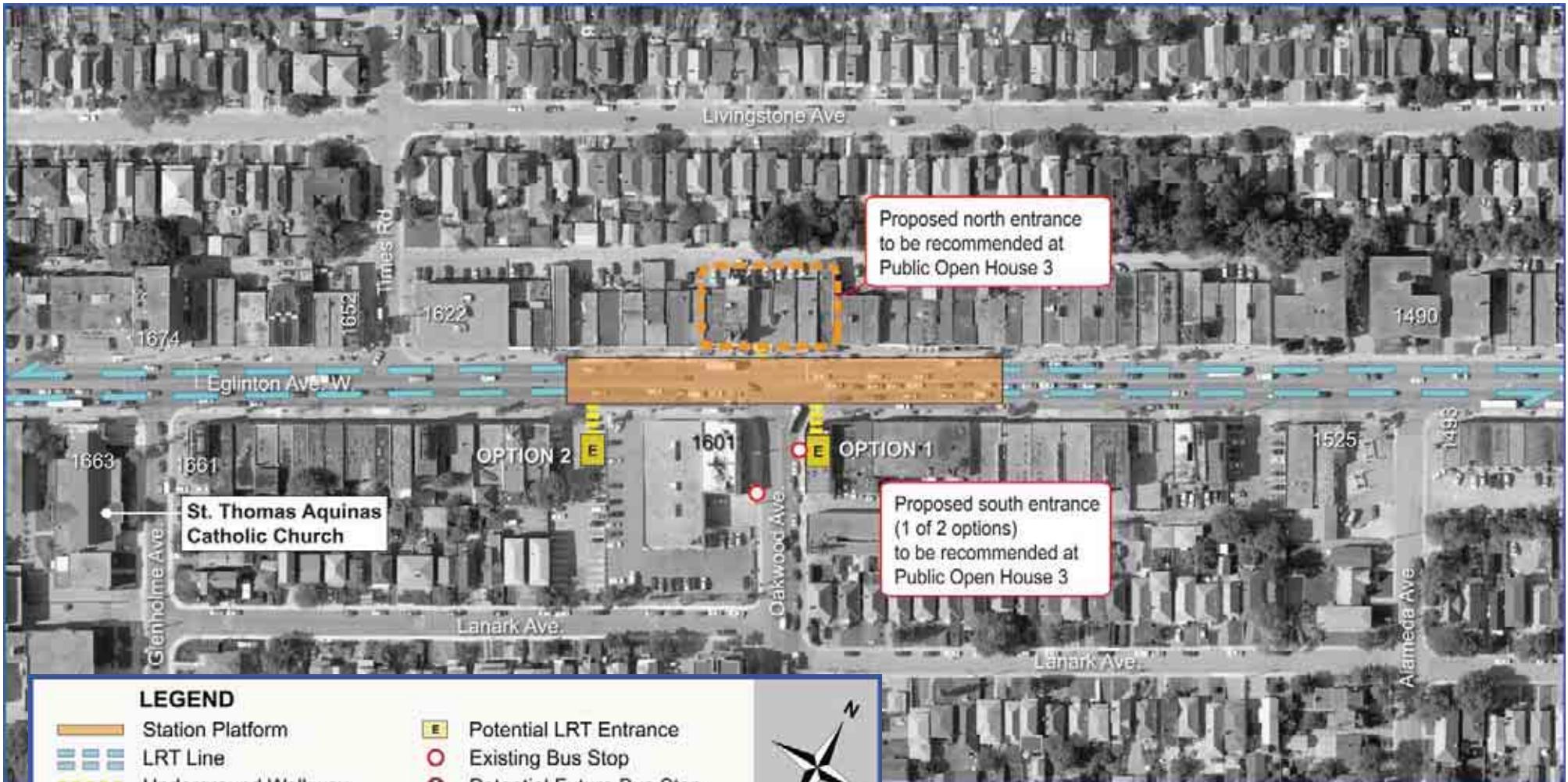
LEGEND	
	Station Platform
	LRT Line
	Underground Walkway
	Potential LRT Entrance
	Existing Bus Stop
	Potential Future Bus Stop
	Street Number



# Dufferin Station



# Oakwood Station



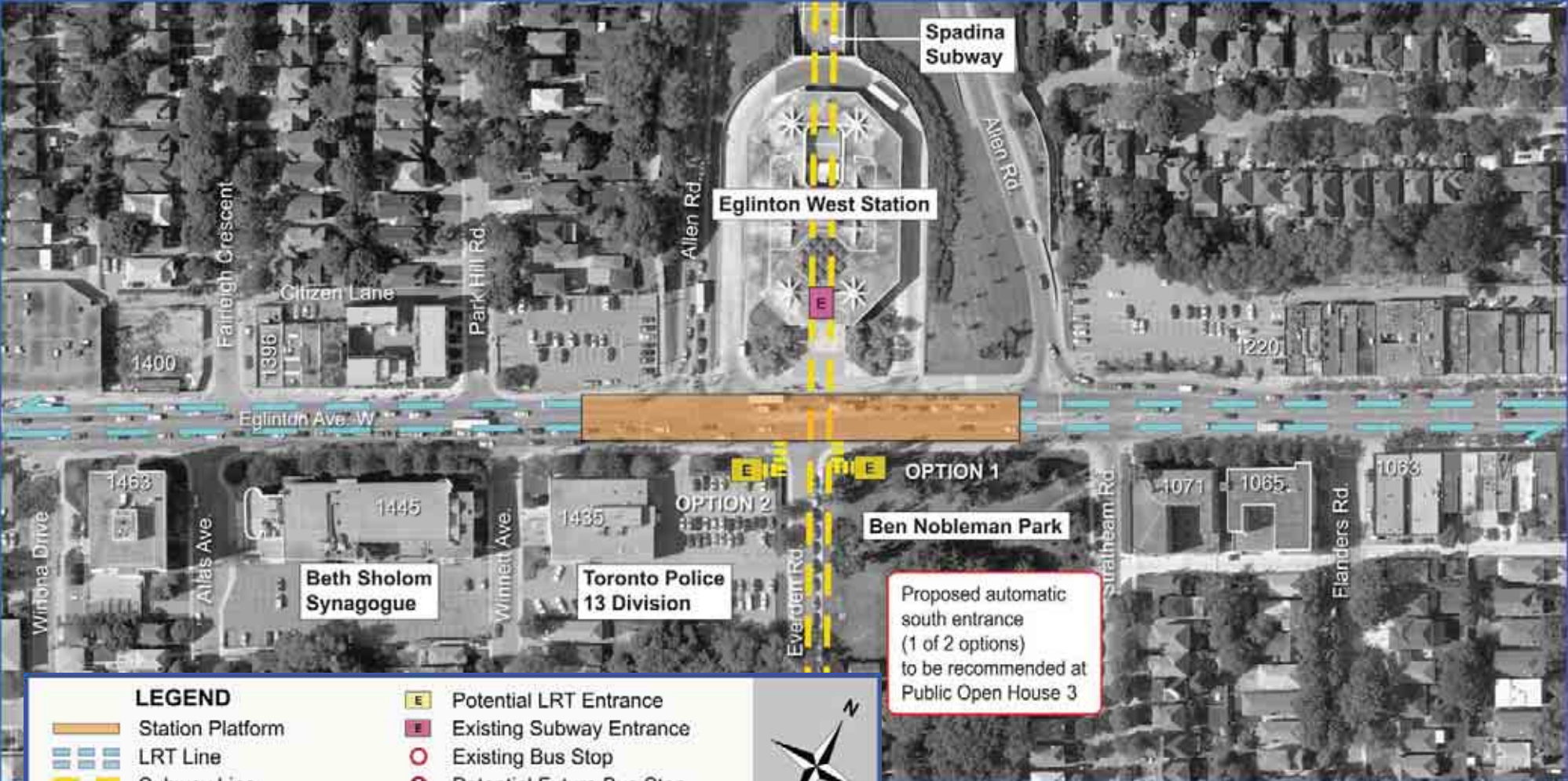
Proposed north entrance to be recommended at Public Open House 3

Proposed south entrance (1 of 2 options) to be recommended at Public Open House 3

**LEGEND**

-  Station Platform
-  LRT Line
-  Underground Walkway
-  Potential LRT Entrance
-  Existing Bus Stop
-  Potential Future Bus Stop
-  1901 Street Number

# Eglinton West - Allen Station

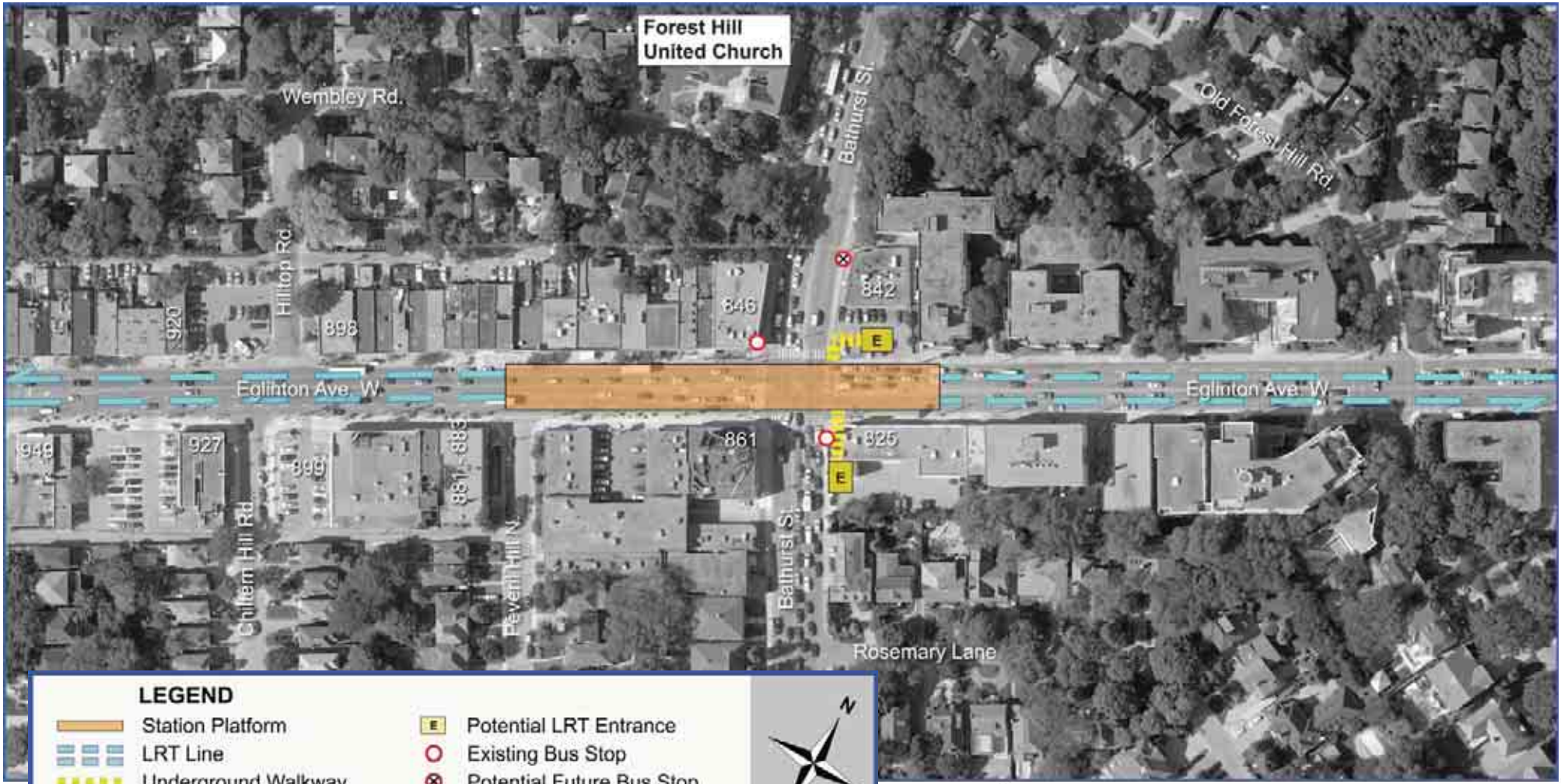


LEGEND	
	Station Platform
	LRT Line
	Subway Line
	Underground Walkway
	Potential LRT Entrance
	Existing Subway Entrance
	Existing Bus Stop
	Potential Future Bus Stop
	Street Number

Proposed automatic south entrance (1 of 2 options) to be recommended at Public Open House 3



# Bathurst Station



**LEGEND**

 Station Platform	 Potential LRT Entrance
 LRT Line	 Existing Bus Stop
 Underground Walkway	 Potential Future Bus Stop
	<b>1901</b> Street Number



# Chaplin Station



**LEGEND**

- Station Platform
- LRT Line
- Underground Walkway
- Potential LRT Entrance
- Existing Bus Stop
- Potential Future Bus Stop
- 1901** Street Number





# Avenue Station

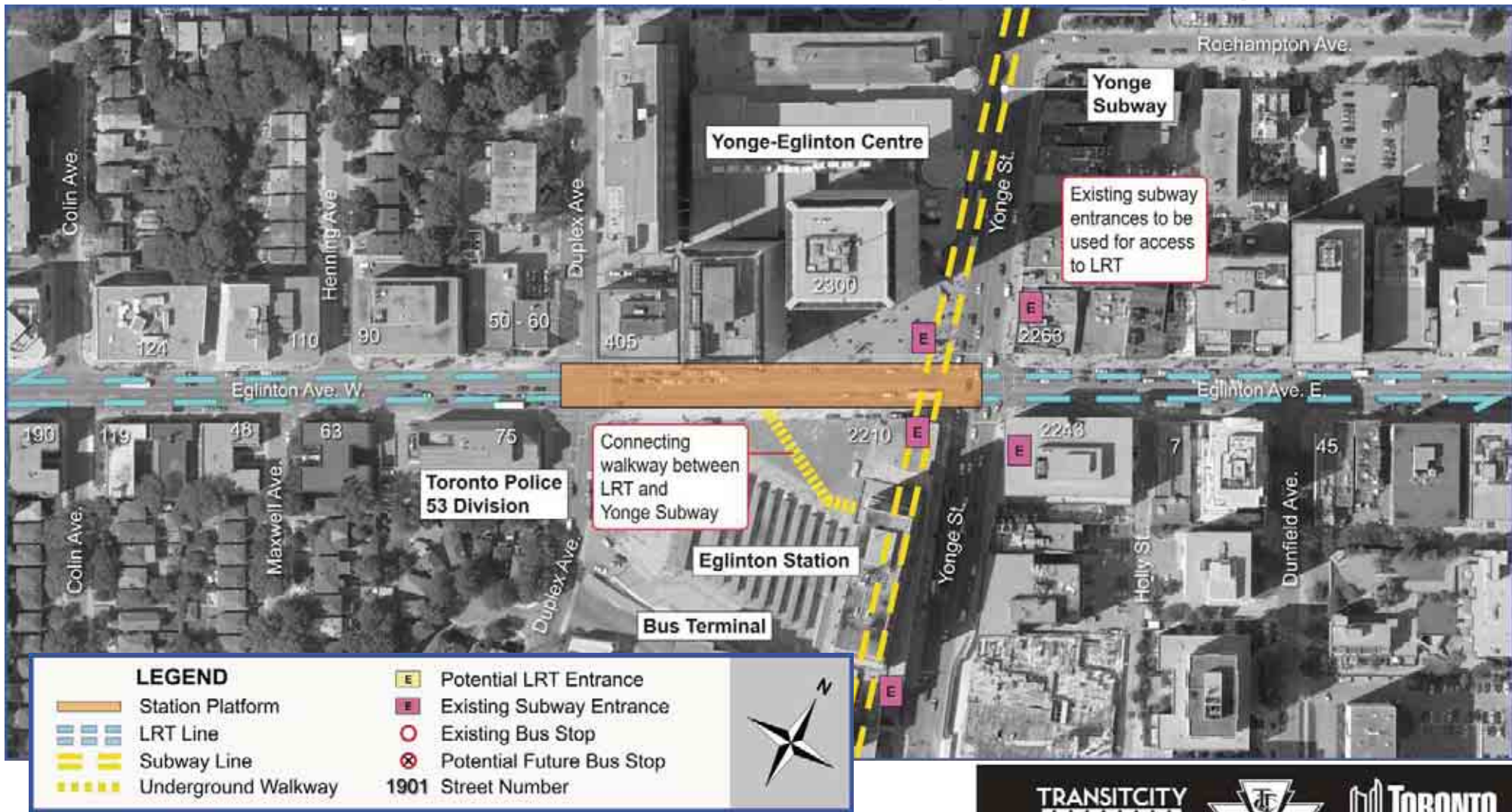


LEGEND	
	Station Platform
	LRT Line
	Underground Walkway
	Potential LRT Entrance
	Existing Bus Stop
	Potential Future Bus Stop
<b>1901</b>	Street Number

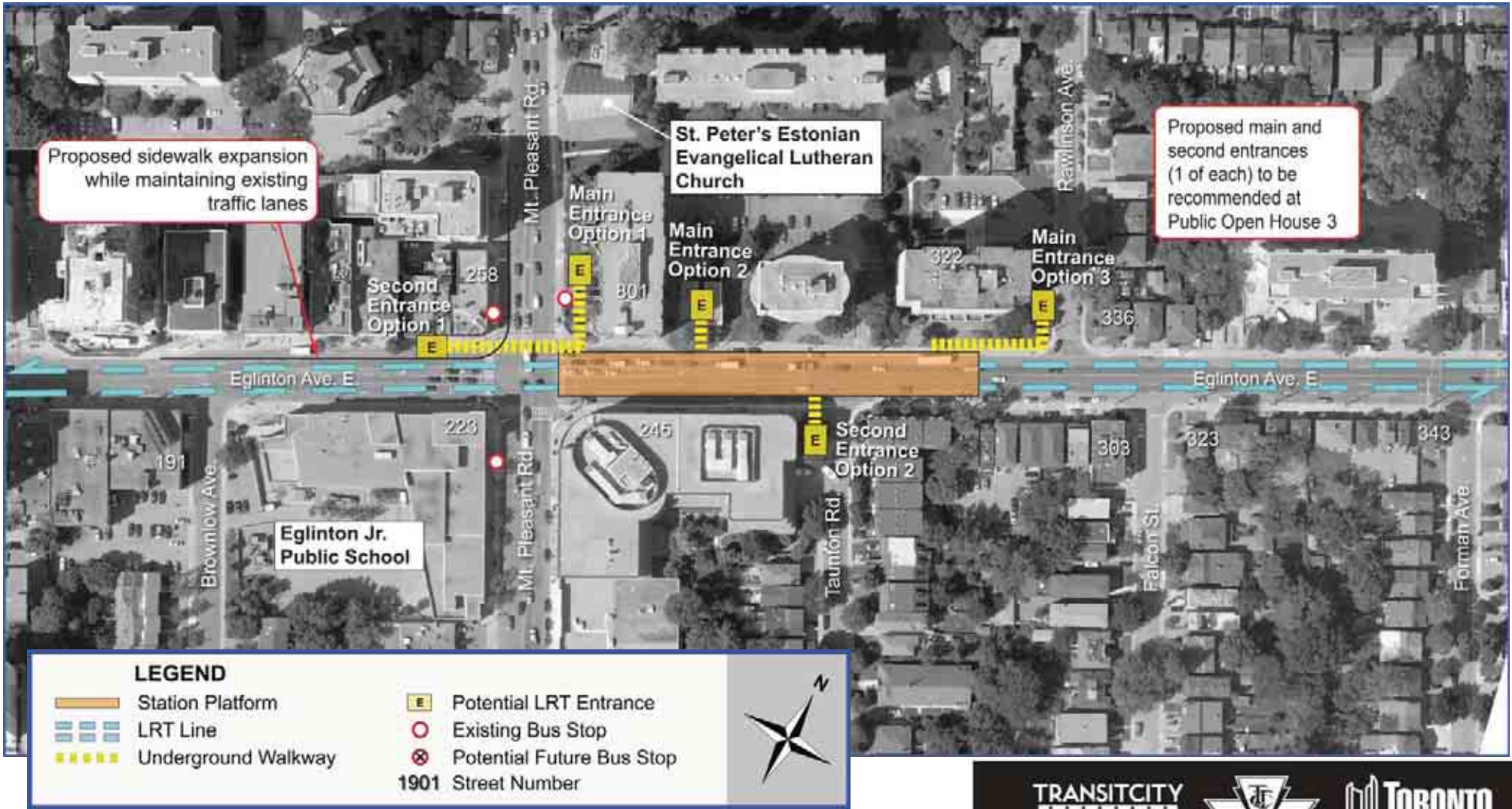




# Eglinton - Yonge Station

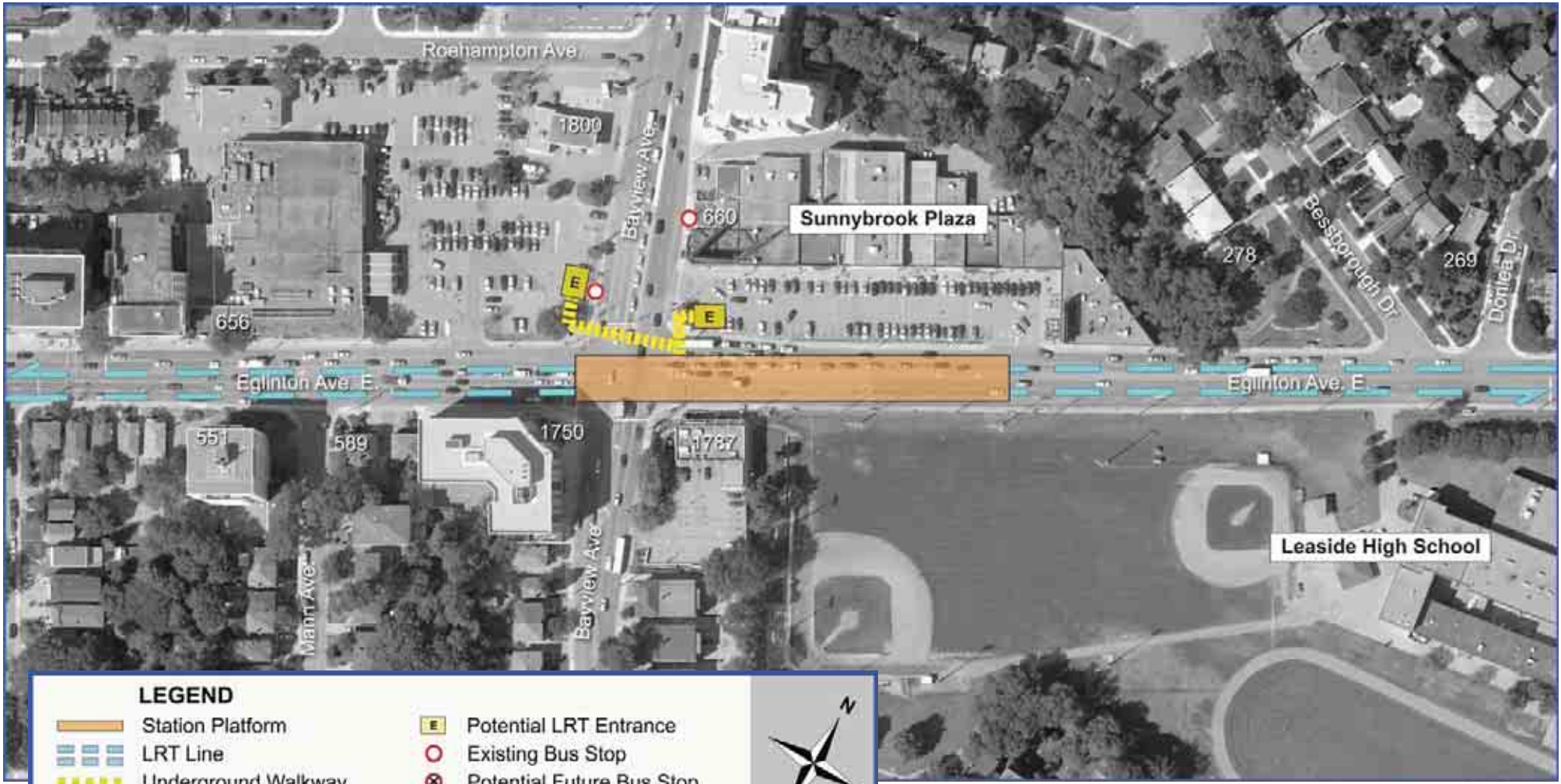


# Mount Pleasant Station





# Bayview Station



**LEGEND**

 Station Platform	 Potential LRT Entrance
 LRT Line	 Existing Bus Stop
 Underground Walkway	 Potential Future Bus Stop
	<b>1901</b> Street Number



# Brentcliffe Station

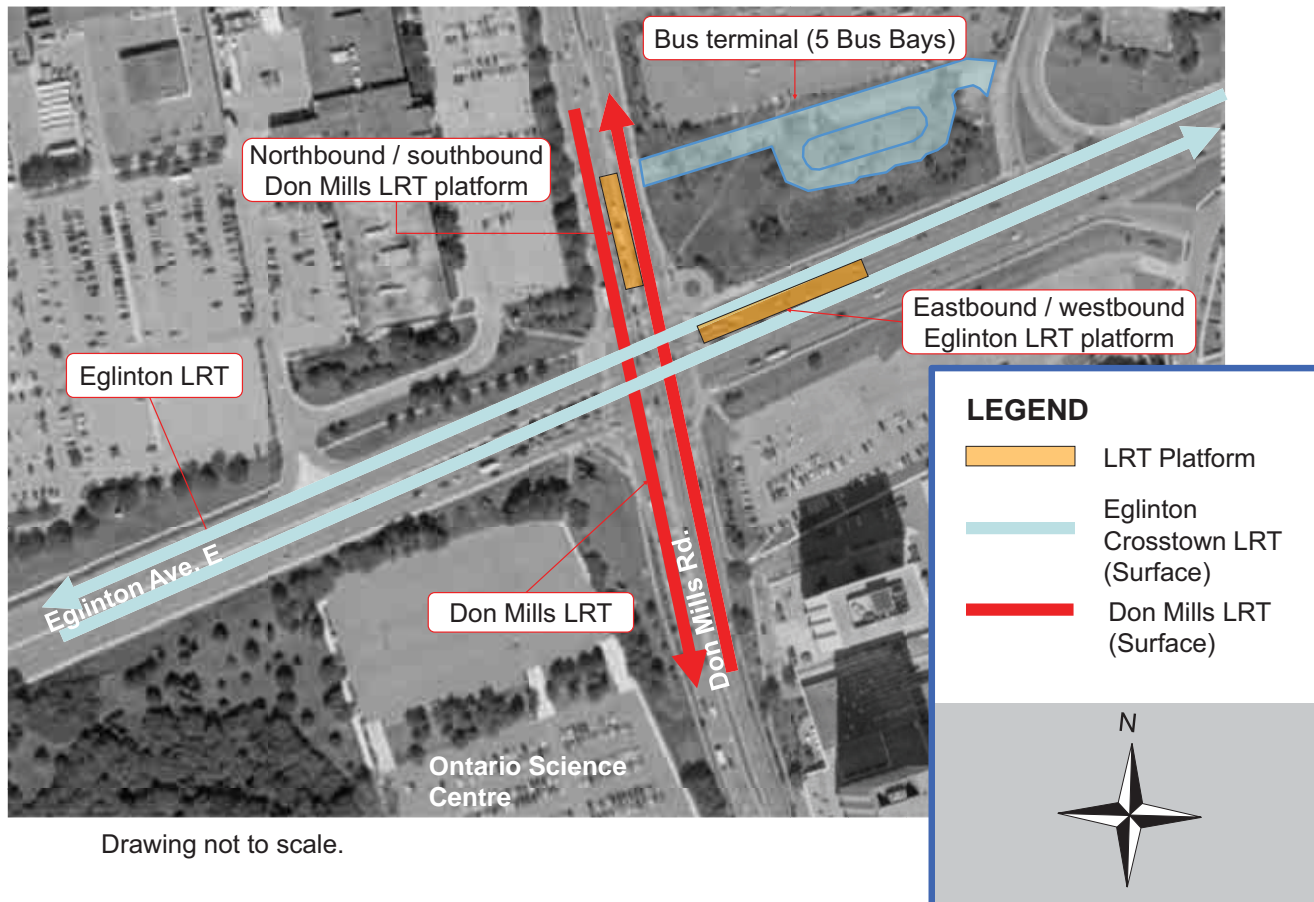


**LEGEND**

Station Platform	Potential LRT Entrance
LRT Line	Existing Bus Stop
Underground Walkway	Potential Future Bus Stop
Proposed Traffic Signal	<b>1901</b> Street Number

# Don Mills Stop – Option 1 (Surface)

Option 1 - In this option, both the Eglinton Crosstown LRT Stop and the Don Mills LRT Stop are at the surface level.

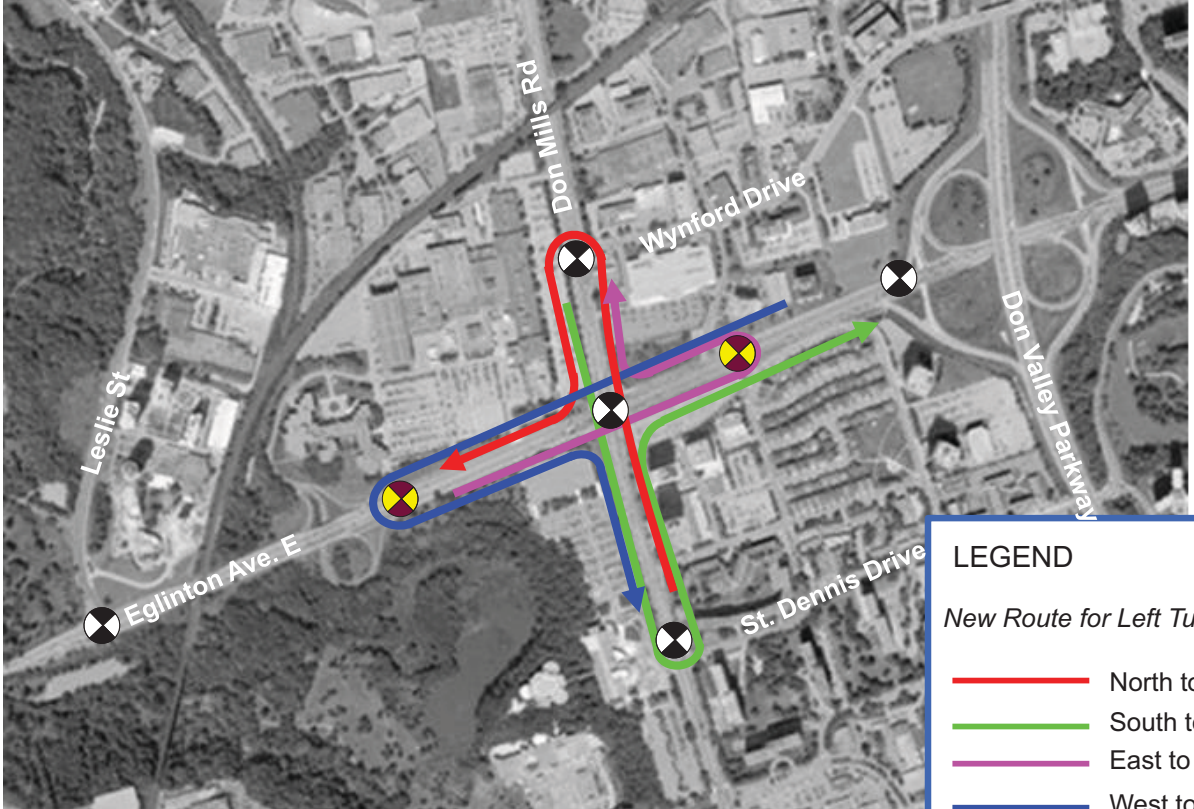


Tracks connecting Don Mills LRT and Eglinton Crosstown LRT may be required for trains to access Maintenance and Storage Facilities.

These requirements will be determined once the Maintenance and Storage Facilities sites are selected.

Drawing not to scale.


# Don Mills Stop – Option 1 (Surface) – Re-routed Left Turns



**LEGEND**

*New Route for Left Turns*

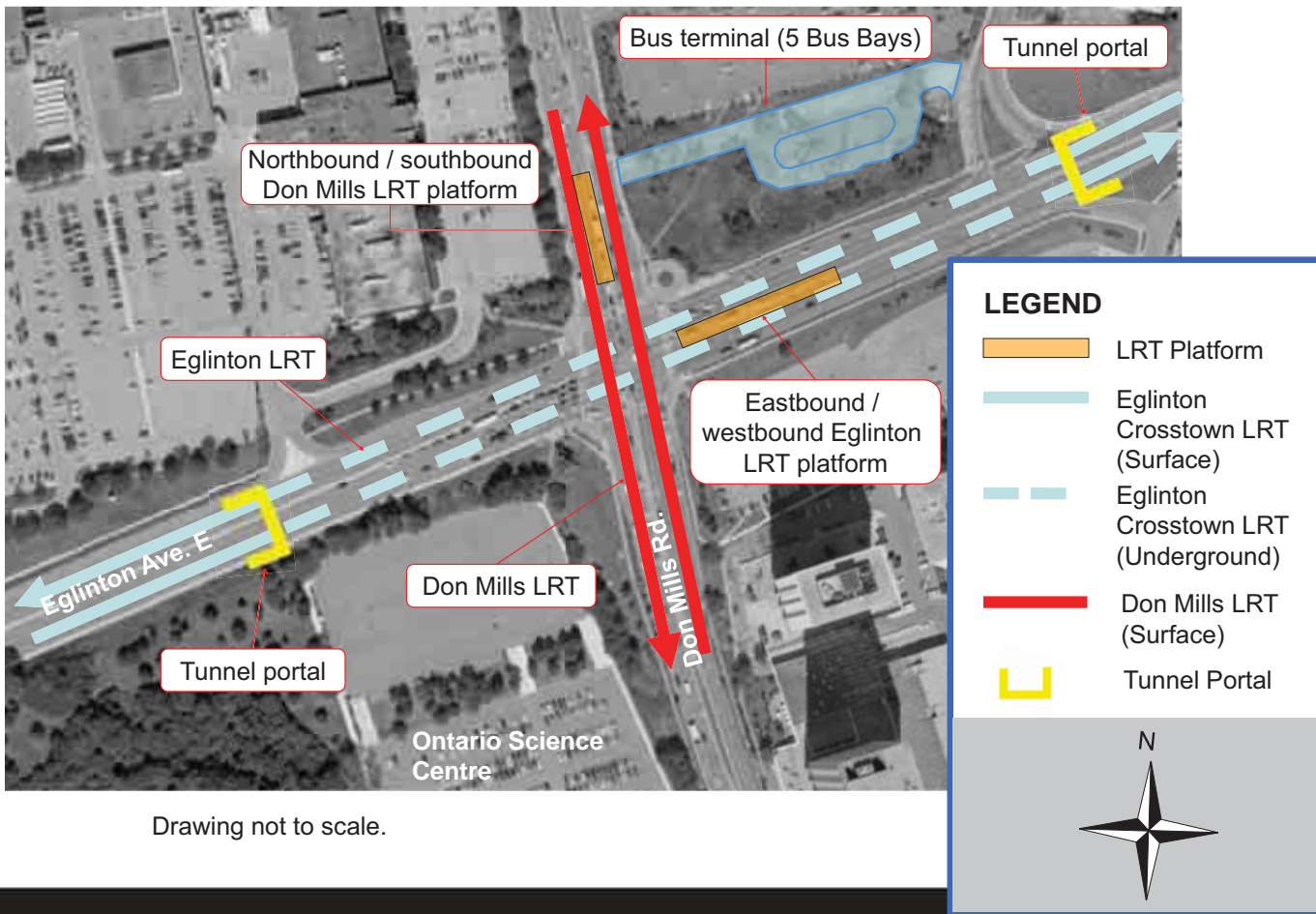
- North to West
- South to East
- East to North
- West to South

-  Existing Traffic Signal
-  Proposed Traffic Signal

Left turns are proposed to be re-routed in Option 1 in order to achieve efficient LRT operation at the intersection of Don Mills Road and Eglinton Avenue. Refer to Panels 17a and 17b for more information on why re-routed left turns are being considered.

# Don Mills Station – Option 2 (Surface and Underground)

Option 2 - In this option, the Eglinton Crosstown LRT Station is underground and the Don Mills LRT Stop is at the surface level.



Drawing not to scale.

Tracks connecting Don Mills LRT and Eglinton Crosstown LRT may be required for trains to access Maintenance and Storage Facilities.

These requirements will be determined once the Maintenance and Storage Facilities sites are selected.



# Don Mills Station – Option 2 (Surface and Underground) – No Change in Left Turns



**LEGEND**

*Route for Left Turns*

- North to West
- South to East
- East to North
- West to South

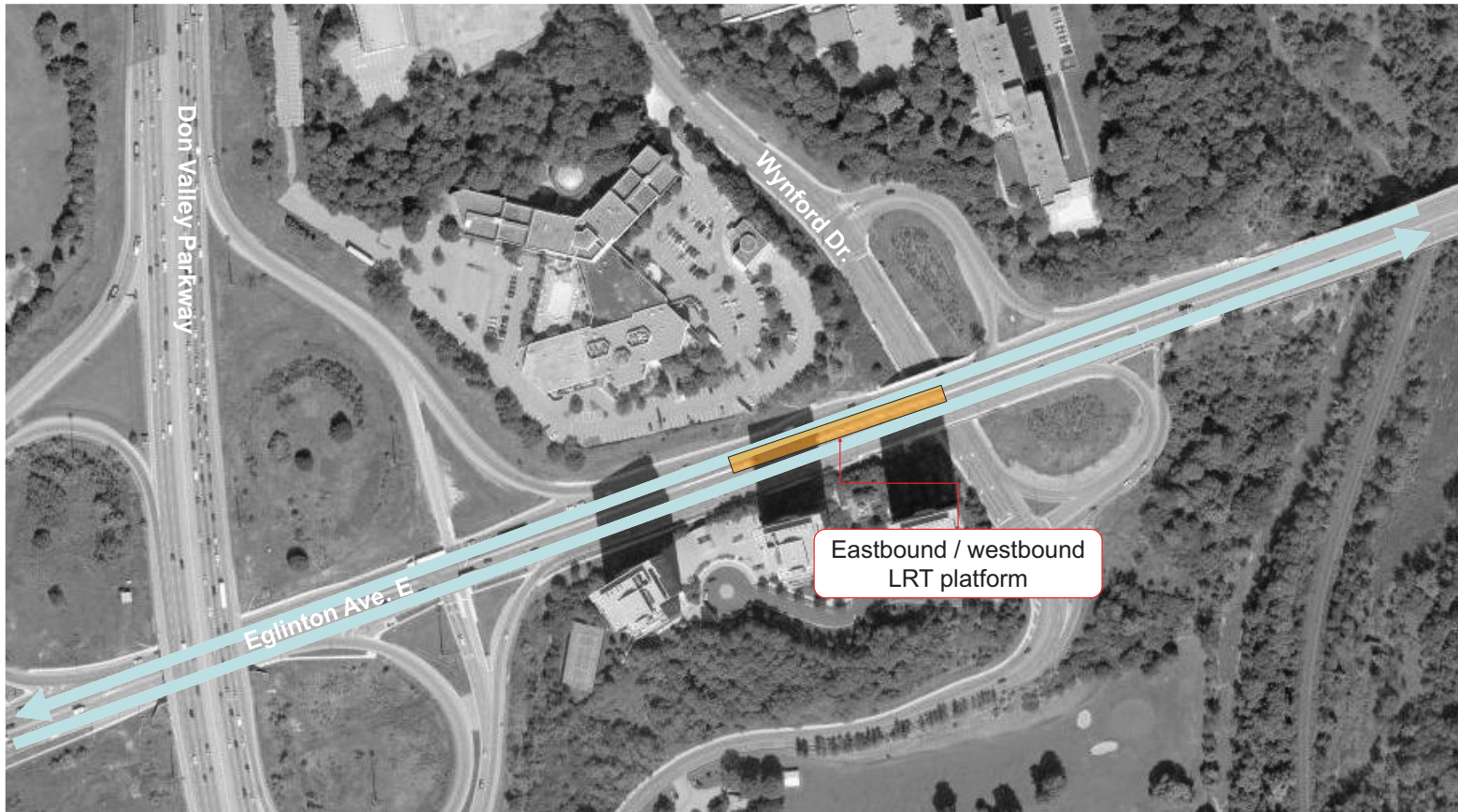
-  Existing Traffic Signal
-  Proposed Traffic Signal

Left turns will continue to be permitted at the intersection of Don Mills Road and Eglinton Avenue under Option 2. The Eglinton Crosstown LRT will not be affected by left turns at this location because the LRT will be underground. Analysis has also shown that left turns will not seriously affect the operation of the Don Mills LRT.








# Wynford Stop – Option 1 (Current Alignment)



Option 1 – Alignment of Wynford Drive stays in its current location.

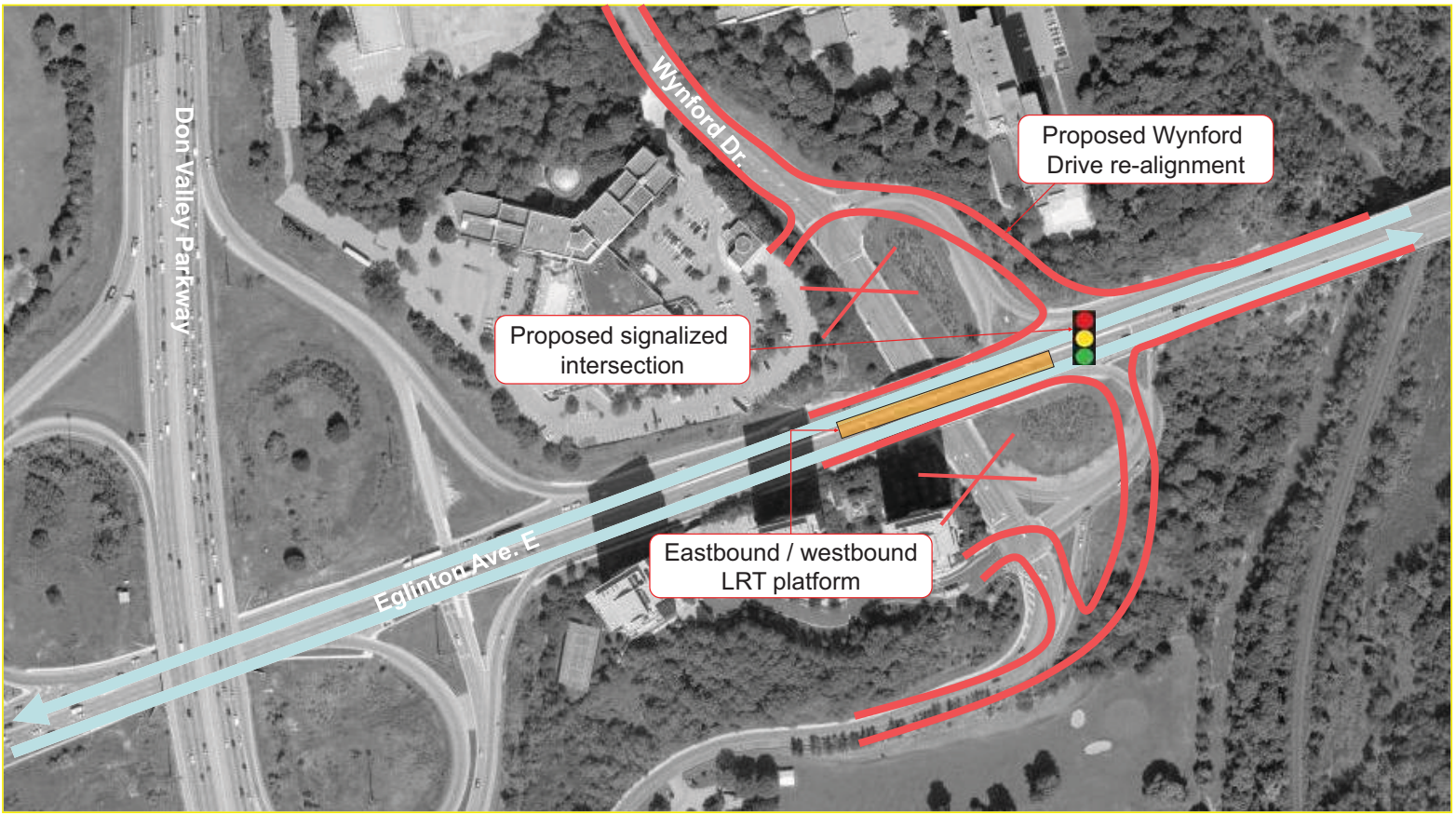
**LEGEND**

-  LRT Platform
-  Eglinton Crosstown LRT (Surface)






Drawing not to scale.


# Wynford Stop – Option 2 (Re-alignment)



Option 2 – Wynford Drive is re-aligned and a new signaled intersection is created at Wynford Drive / Eglinton Avenue E.

**LEGEND**

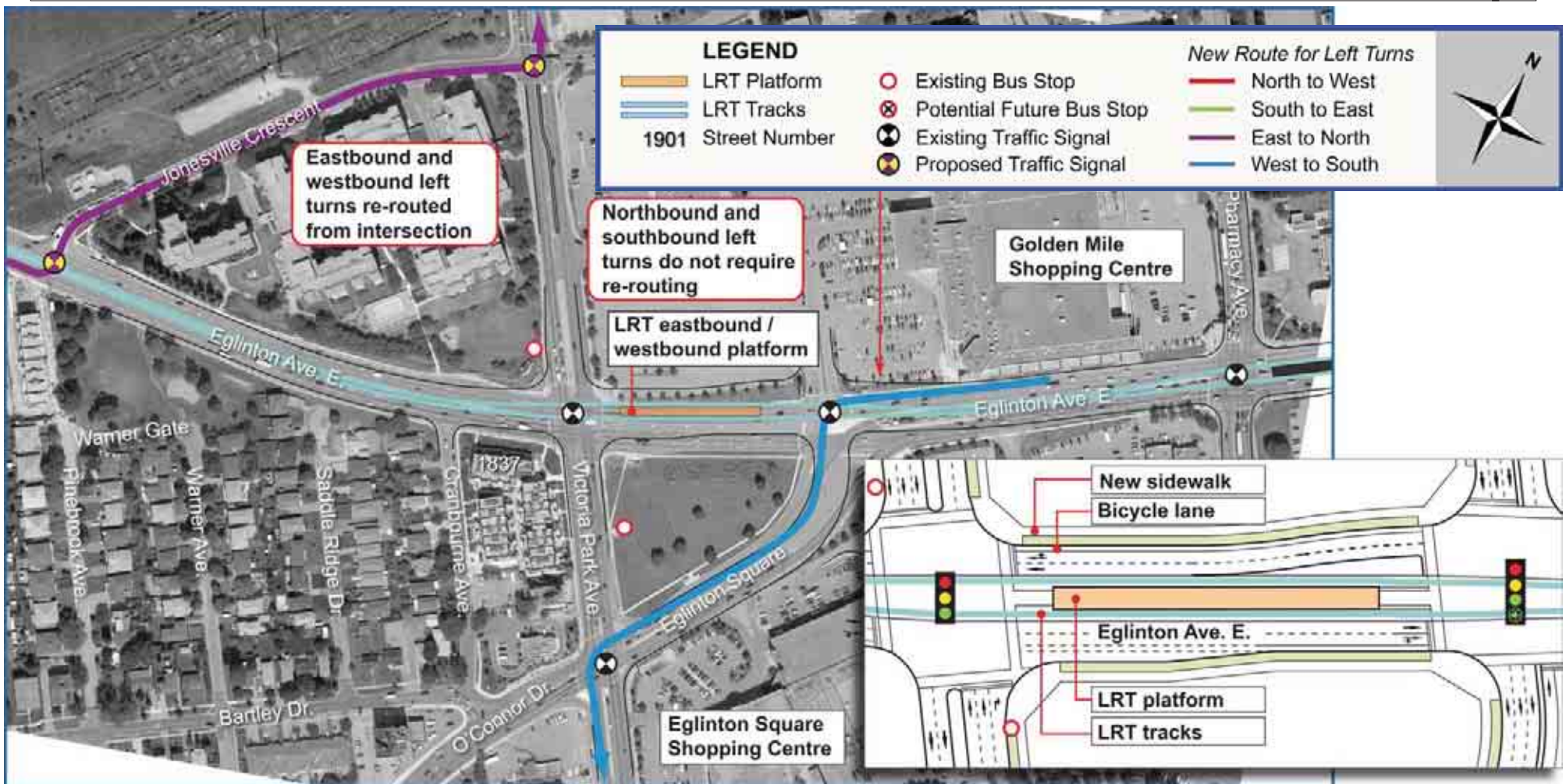
-  LRT Platform
-  Eglinton Crosstown LRT (Surface)
-  Proposed Wynford Drive Re-alignment



Drawing not to scale.

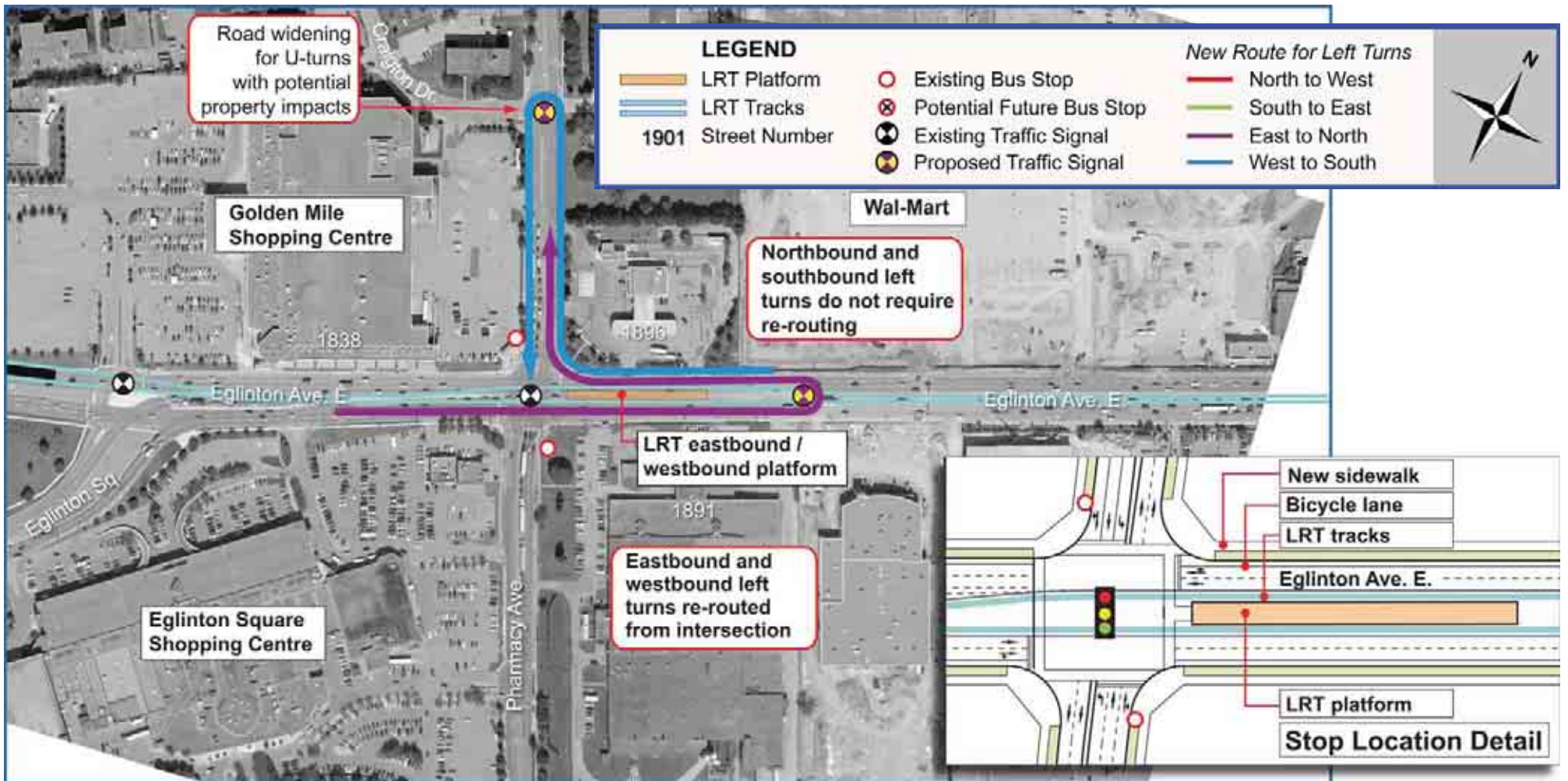


# Victoria Park Stop





# Pharmacy Stop



# Warden Stop

